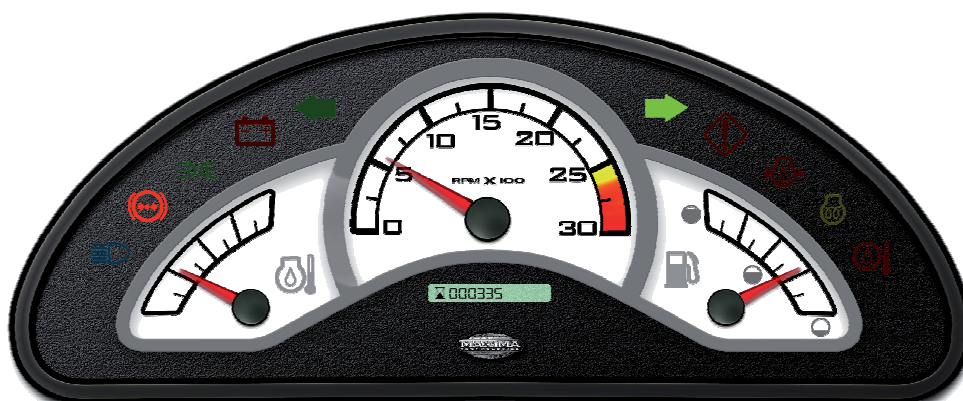


TriFlex

3-gauge economy cluster



(mm)



TriFlex is a competitively priced instrument cluster derived from a proven OEM platform that is ideal for construction and agricultural equipment. Unit provides two gauges, a full-size tachometer, LCD hourmeter and 12 indicators.

As a standard platform, it can be readily adapted to myriad applications. And, it's produced on a line featuring extensive error-proofing to ensure a high quality result. **Turn for technical specifications »**

TriFlex

3-Gauge economy cluster

General specifications

DISPLAY	
TYPE	LCD hourmeter with 6 digits and hourmeter symbol
INDICATORS	12 LED status indicators; red, amber, green, blue
ILLUMINATION	LED backlighting

INPUTS/OUTPUTS	
FUEL GAUGE	Based on resistive type sender or maximatecc IntelliSensor® Vout
TEMPERATURE GAUGE	Based on resistive type sender
TACHOMETER	Input via magnetic pick-up or alternator connected
INDICATORS	All 12 indicators STG or STB. 6 capable of flashing
LIGHTING	Controlled via pin 20 (positive power supply)
GROUND	1 ground (pin 1)

POWER	
VOLTAGE	12/24 V nominal (9-16/18-32V)
ELECTRICAL PROTECTION	Reverse polarity, transients including load-dump, over-voltage, and ESD
CURRENT	Standby current draw <7 mA

ENVIRONMENT	
IP CLASS	Front IP67, Rear moisture-/dust-resistant
TEMPERATURE RANGE (°C)	-30°C to +70°C (operating) -40°C to +85°C (storage)
EMC CONFORMITY	ISO 13766 (radiated emissions) SAE J1113-21 (radiated immunity)
SAE COMPLIANT	Vibration, UV, salt spray and chemical compatibility

ENCLOSURE	
HOUSING	UV-resistant PC overlay
CONNECTORS	20-pin Molex connector
MOUNTING	Panel installation, 3 screws (5mm/#10) or 2 studs and brackets

SIZE AND WEIGHT	
W x H x D (mm/inches)	282/111.1 x 113/4.4 x 42/1.7
WEIGHT (kg/lbs)	0.27/0.6

PIN ASSIGNMENTS

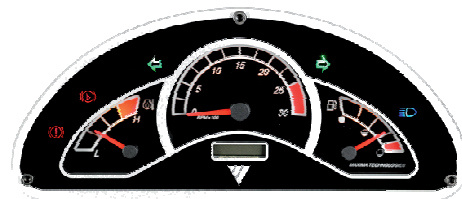
Connector is lead-free & RoHS compliant

PIN #	TYPE/FUNCTION
1	Ground/Ground Supply
2	12V/Ignition (+ Supply)
3	Analog Input/Fuel Level
4	Analog Input/Temperature
5	Frequency Input/Tachometer
6	STB-STG/Status Indicator
7	STB-STG/Status Indicator
8	STB-STG/Status Indicator
9	STB-STG Status Indicator
10	STB-STG Status Indicator
11	STB-STG/Status Indicator
12	STB-STG/Status Indicator
13	STB-STG/Status Indicator
14	STB-STG/Status Indicator
15	STB-STG/Status Indicator
16	STB-STG/Status Indicator
17	STB-ST G/Status Indicator
18	STB-STG/ Digital input (key switch)
19	STB-STG/ Digital input
20	STB/Backlight

Memo: "STB" = switch-to-battery, "STG" = switch-to-ground.

CUSTOMIZATION OPTIONS

3GEC platform allows for customization of LED status indicators as well as changes to the overlay and dials. Additionally, it is possible to change gauge functions



maximatecc.

AN ACTUANT COMPANY

Sales contact sales@maximatecc.com | General info@maximatecc.com | www.maximatecc.com

© 2013 maximatecc. All rights reserved. The information herein is supplied without any guarantees and can change without prior notification.
Shielded cables may be necessary to fulfill industrial EMC standards. Some functionality may have limited operating temperatures. CANopen is a registered trademark of CAN in Automation (CIA).