



Genuine Parts

PRECAUTIONS:

- Read ALL instructions before using instrument.
- Follow ALL safety precautions when working on equipment- wear safety glasses!

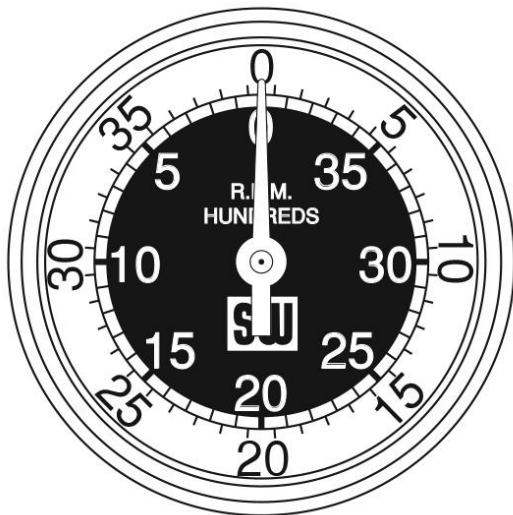
HELP?:

- If after reading these instructions you don't fully understand how to install your instrument(s), contact your local Stewart Warner distributor, or contact our Technical Support Team toll free at **1-800-676-1837**
- Additional applications information may be found at www.stewartwarner.com.

Installation Instructions
Hand-Held Tachometer

1

2



Handheld Tachometer
82682

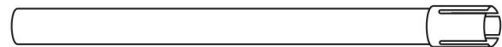
Accessories:



Cone Drive Tip
96798



Cup Drive Tip
96799



Extension Shaft
412850

3

4

OPERATION:

- 1) Before taking a reading, remove all dirt and grease from the surface to be checked (hub cap, pulley, shaft, etc.)
- 2) Hold the instrument directly in line with the center of the rotating surface.
- 3) Place the rubber tip against the rotating surface using only enough pressure to prevent slippage.
- 4) Take the reading. R.P.M. readings can be converted to M.P.H. using the formulas in this instruction sheet.

CAUTION: Do not use excessive pressure or hold the instrument at an angle to the rotating surface as this will cause a faulty reading or damage the instrument or can cause personal injury.

NOTE: Do not use on surfaces rotating over 4000 R.P.M.

DESCRIPTION OF ACCESSORY ITEMS:

- 96798 is used for shafts with a center hole while 96799 is for use with shafts, pulleys, saws, etc. that have a flat end surface.
- For hard-to-reach places, order extension shaft 412850.

MILES PER HOUR CONVERSION (Figure 1):

- 1) Obtain the rolling circumference of tire by:
 - a) Mark tire and floor directly below center of hub
 - b) Move the vehicle one revolution of the tire and mark the floor corresponding to the mark on the tire.
 - c) Measure the distance (in inches) between the two marks.
- 2) Obtain the R.P.M. from the tachometer reading.
- 3) Substitute the distance measured and the R.P.M. reading into the formula and compute.

EXAMPLE: If the rolling circumference of a tire is found to be 121 inches and the R.P.M. reading is 350, what is the M.P.H.?

MAINTENANCE:

- 1) Place one drop of oil on the thrust washer when dry.
- 2) When not in use, keep the instrument in the container supplied to avoid damage. This is a delicate instrument and must be handled with care at all times.

CAUTION: Never oil the internal mechanism of this instrument.

NOTE: Because these instruments are precision-assembled at the factory, it is impossible to disassemble a unit without damaging or impairing the operative function of the unit. Therefore, replacement is by unit only.

7

8

Figure 1

$$\text{MILES PER HOUR} = \frac{\text{REVOLUTIONS PER MINUTE} \times \text{ROLLING CIRCUMFERENCE OF TIRE IN INCHES}}{1056}$$

$$\text{MPH} = \frac{350 \times 121}{1056} = \frac{42350}{1056} = 40.1$$

$$\text{MPH} = 40.1$$

9

10

CLEANING DIRECTIONS:

For proper cleaning of instrumentation/accessories, use a glass cleaner or mild detergent with a spray on and wipe method.

WARRANTY INFORMATION:

TWO (2) YEAR LIMITED WARRANTY. Stewart Warner products are warranted against defects in workmanship and materials for a period of two (2) years from the date of purchase. Proof-of-purchase is required; otherwise, the warranty period shall default to two (2) years from date-of-manufacture (as indicated by the date code on the product). See detailed Warranty Policy for other Terms & Conditions.

STEWART WARNER

1-800-676-1837

www.stewartwarner.com