

STEWART-WARNER



Iconic Products for Iconic Rides

Since 1905, Stewart Warner has been the brand name for instrumentation you can count on—a true American icon. From Model T's to muscle cars to farm tractors to buses, Stewart Warner brand products keep on working, year after year. Whether it's our stylishly retro Wings™ line of gauges, Power Series™ and Green Line™ gauges for muscle cars, or our timeless white on black Deluxe™ line of products, we have the right products for almost every customer.



TABLE OF CONTENTS



WHAT'S INSIDE...

BOOST	4
FORGED CARBON	5
CATALINA SERIES	6
MARINER SERIES.	6
MUSCLE SERIES	8
3-IN-1 KITS	8
AVIATOR.	10
GREEN LINE™	11
POWER SERIES™	12
DELUXE™	14
WINGS™	18
STANDARD™	21
HEAVY DUTY™	22
HEAVY DUTY PLUS™	24
ACCESSORIES.	26
ACCESSORIES.	26
SENDERS.	27



The first name in vehicle instruments.

BOOST

Make sure your car is dialed in properly with Stewart Warner Vac/boost gauges. The mechanical movement gives a precise reading of the intake manifold vacuum/boost level. It informs if there is vacuum/boost leaks, and when changing boost pressure via controller or pulley/tune—always providing you with accurate readings. Available in Deluxe, Wings and Green Line styling. Customize your iconic ride with one today.



838494



838495



838496



838497



838498



838499

BOOST GAUGE LINE							
TYPE	RANGE	MECH	ELEC	GAUGE LINE	SIZE	BEZEL/FINISH	FACE
Vac/Boost	30" Hg-20 psi	838494		Deluxe	2-1/6"	Polished	Black
Vac/Boost	30" Hg-20 psi	838495		Deluxe	2-1/6"	Polished	White
Vac/Boost	30" Hg-20 psi	838496		Wings	2-1/6"	Chrome	Black
Vac/Boost	30" Hg-20 psi	838497		Wings	2-1/6"	Chrome	White
Vac/Boost	30" Hg-20 psi	838498		Wings	2-1/6"	Chrome	Beige
Vac/Boost	30" Hg-20 psi	838499		Green Line	2-1/6"	Chrome	Green Line



FORGED CARBON

Stand out from the crowd with our newest line of gauges, created to pair perfectly with the forged carbon motif so many car lovers have come to cherish. With a unique black chrome bezel, gray and red backlit graphics - that provides better lighting than the average flood light design - which are offset by a bold red pointer, our Forged Carbon Gauges deliver easy-to-read information that pairs perfectly with a unique dashboard design.



838477



838474



838478



838473

FORGED CARBON GAUGE LINE					
GAUGE	P/N	SCALE	DIAMETER	BEZEL/FINISH	VOLT
Fuel	838473	E-1/2-F	2-1/16"	Black chrome bezel	12v
Temp	838475	100°-280°	2-1/16"	Black chrome bezel	12v
MPH	838477	0-160 MPH	3-3/8"	Black chrome bezel	12v
Volts	838476	10-16	2-1/16"	Black chrome bezel	12v
Oil PSI	838474	0-100	2-1/16"	Black chrome bezel	12v
5-Gauge Kit	838479	—	—	—	—

Gauges available for purchase individually or as a kit. Kit includes five gauges and hall effect speed sensor, fuel sender, electric temp. sender w/adapters, electric pressure sender w/adaptor, mounting hardware, light kits and installation instructions.

5-Gauge Kit
5-gauge kit includes: 3-3/8" 160 mph Speedometer, 2-1/16" Voltmeter, Oil Pressure, Water Temperature, & Fuel Level.

FORGED CARBON RPM TACH GAUGE	
P/N:	838478
Type:	RPM Tach Gauge -Electrical
Scale:	0-8000 RPM
Diameter:	3-3/8"
Bezel Finish:	Black chrome bezel
Volt:	12v
RPM Tach Gauge is sold separately. RPM Tach Gauge comes with mounting hardware, light kit and instillation instructions.	

CATALINA SERIES

Our new line of Catalina gauges features a blue background, brilliant orange and gray backlit graphics, fluorescent rocket red/orange pointer and chrome bezel. Like all Stewart-Warner gauges, our Catalina line combines modern performance and quality with a design as genuine and beautiful as your vehicle. Designed for Retro Mod and other vehicles where you want your instrumentation to stand out.



838429



838428

CATALINA

TYPE	RANGE	SIZE	ELEC	MECH	NOTES/ADDITIONAL KITS NEEDED
Fuel Level	E-1/2-F	2-1/16"	838420		Fuel Level Sender (240-33.5 Ω) SW Match
Voltmeter	10-16V	2-1/16"	838426		
Oil Pressure	0-100 PSI	2-1/16"	838427		Pressure Sender 279B-F
Speedometer	0-160 MPH	3-3/8"	838428		988P GPS or 82623B Hall Effect Senders Recommended
Water Temperature	100-280°F	2-1/16"	838429		Temp Sender 280ED-F
Tachometer	0-8,000 RPM	3-3/8"	838430		Tach Adaptor May Be Required w/ Aftermarket Ignition

CATALINA KITS

838446	5-Gauge Kit	Includes: Electric speedometer, oil pressure gauge, water temperature gauge, fuel level gauge, and voltmeter; Electrical senders, light kits, mounting hardware, and installation instructions.			
--------	-------------	-------------------------------------------------------------------------------------------------------------------------------------------------------------------------------------------------	--	--	--

MARINER SERIES

Our new line of Mariner gauges features a creme colored background with blue and orange perimeter lit graphics, and a blue pointer. Our Mariner line combines modern performance and quality with a design as genuine and beautiful as your vehicle. Designed for Marine applications and vehicles where a light colored background is desired.



838410



838414

MARINER

TYPE	RANGE	SIZE	ELEC	MECH	NOTES/ADDITIONAL KITS NEEDED
Fuel Level	E-1/2-F	2-1/16"	838410		Fuel Level Sender (240-33.5 Ω) SW Match
Voltmeter	10-16V	2-1/16"	838413		
Oil Pressure	0-100 PSI	2-1/16"	838411		Pressure Sender 279B-F
Speedometer	0-160 MPH	3-3/8"	838414		988P GPS or 82623B Hall Effect Senders Recommended
Water Temperature	100-280°F	2-1/16"	838412		Temp Sender 280ED-F
Tachometer	0-8,000 RPM	3-3/8"	838415		Tach Adaptor May Be Required w/ Aftermarket Ignition

MARINER KITS

838448	5-Gauge Kit	Includes: Electric speedometer, oil pressure gauge, water temperature gauge, fuel level gauge, and voltmeter; Electrical senders, light kits, mounting hardware, and installation instructions.			
--------	-------------	-------------------------------------------------------------------------------------------------------------------------------------------------------------------------------------------------	--	--	--

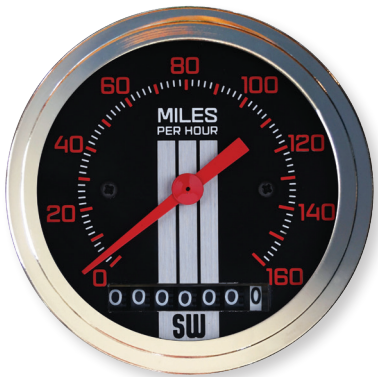


MUSCLE SERIES

Introducing our new line of Muscle gauges featuring a sleek, brushed aluminum finish, brilliant backlit graphics, retro red pointer and chrome bezel. Our Muscle line combines modern performance and quality with a design as genuine and beautiful as your vehicle. Designed for Retro Mod and Muscle cars from the past and present.



838436



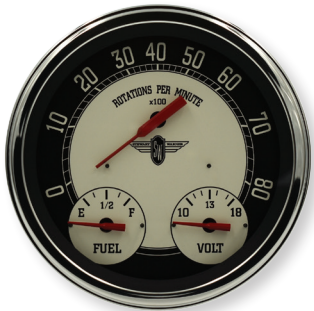
838438

MUSCLE					
TYPE	RANGE	SIZE	ELEC	MECH	NOTES/ADDITIONAL KITS NEEDED
Fuel Level	E-1/2-F	2-1/16"	838418		Fuel Level Sender (240-33.5 Ω) SW Match
Voltmeter	10-16V	2-1/16"	838436		
Oil Pressure	0-100 PSI	2-1/16"	838437		Pressure Sender 279B-F
Speedometer	0-160 MPH	3-3/8"	838438		988P GPS or 82623B Hall Effect Senders Recommended
Water Temperature	100-280°F	2-1/16"	838439		Temp Sender 280ED-F
Tachometer	0-8,000 RPM	3-3/8"	838440		Tach Adaptor May Be Required w/ Aftermarket Ignition
MUSCLE KITS					
838447	5-Gauge Kit	Includes: Electric speedometer, oil pressure gauge, water temperature gauge, fuel level gauge, and voltmeter; Electrical senders, light kits, mounting hardware, and installation instructions.			

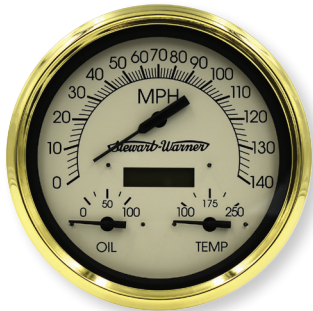
3-IN-1 KITS

The latest in Stewart Warner’s new releases of vintage styles come in a new multi-functional three-in-one gauge that combines all of the most useful gauges. Our Vintage and Nostalgic sets offer a nod to the iconic Stewart Warner gauges of yesteryear with modern performance quality.

- Each kit contains two gauge clusters
- Each cluster features three gauges inside the 4-3/8” diameter housing
- Kits include mounting hardware, harness, and senders for an all-in-one solution



82258-Nostalgic Kit



82259-Vintage Kit

3-IN-1 GAUGES		
PART NUMBER	ITEM	DESCRIPTION
82258	Nostalgic Kit	Tan Background / Stainless Steel Bezel / Red Pointers
82259	Vintage Kit	Tan Background / Gold Bezel / Black Pointers



AVIATOR

Be the pilot of your dream vehicle with the new Aviator gauge line. Modeled to look like the gauges used in aircraft from the 40s and 50s, the Aviator gauge line features cream and black pointers with backlit white and tan perimeter graphics, which are all offset by a black background.

- A cream and black pointer with white and tan perimeter
- Lit graphics on a black background
- Special graphics reminiscent of those in aircraft
- Modeled after iconic aircraft of the 50s



838514 & 838513



838465



838461



838464

AVIATOR FLANGES

P/N:	838514	838513
Diameter:	3-3/8"	2"
Bezel Finish:	Black power-coated aluminum	

Aviator-gauge-compatible four-hole flanges are sold separately. To purchase visit stewartwarner.com.

AVIATOR GAUGE LINE

GAUGE	P/N	SCALE	DIAMETER	BEZEL/FINISH	VOLT
Fuel	838460	E-1/2-F	2-1/16"	Black anodized aluminum	12v
Temp	838462	100°-280°	2-1/16"	Black anodized aluminum	12v
MPH	838464	0-160 MPH	3-3/8"	Black anodized aluminum	12v
Volts	838463	10-16	2-1/16"	Black anodized aluminum	12v
Oil PSI	838461	0-100	2-1/16"	Black anodized aluminum	12v
5-Gauge Kit	838466	—	—	—	—

Gauges available for purchase individually or as a kit. Kit includes five gauges and hall effect speed sensor, fuel sender, electric temp. sender w/adapters, electric pressure sender w/adaptor, mounting hardware, light kits and installation instructions.

AVIATOR RPM TACH. GAUGE

P/N:	838465
Type:	RPM Tach Gauge -Electrical
Scale:	0-8000 RPM
Diameter:	3-3/8"
Bezel Finish:	Black anodized aluminum
Volt:	12v

RPM Tach. Gauge is sold separately. RPM Tach. Gauge comes with mounting hardware, light kit and installation instructions.

GREEN LINE™

You can't get more genuine than our original Green Line™ gauges! Original 1960's artwork was used to create our most requested line. Gauges are available in 2-1/16" and 2-5/8" sizes. Tachs and speedos in 3-3/8" with full dial sweep.

- Dials feature brushed center disc and red pointer
- Unique light ring for superior night time illumination
- Polished SAE step bezel
- Sealed front, dust proof rear



360DP



375T



530DH



690TM



311CC



301AW

GREEN LINE™

TYPE	RANGE	SIZE	ELEC	MECH	NOTES/ADDITIONAL KITS NEEDED
Ammeter	60-0-60	2-1/16"	359CE		Internally Shunted
Ammeter	60-0-60	2-5/8"	690W		Internally Shunted
Fuel Level	E-1/2-F	2-1/16"	301AW		Fuel Level Sender (240-33.5 Ω) SW Match
Oil Pressure	0-80 PSI	2-1/16"	306BB		Pressure Sender 279A
Oil Pressure	0-100 PSI	2-1/16"		360DP	6ft (82553-F) or 16ft (366HM-F) Tube Kit
Oil Pressure	0-100 PSI	2-5/8"		691BS	6ft (82553-F) or 16ft (366HM-F) Tube Kit
Speedometer	0-160 MPH	3-3/8"	530DH		988P GPS or 82623B Hall Effect Senders Recommended
Tachometer	0-8,000 RPM	3-3/8"	531CC		Tach Adaptor May Be Required w/ Aftermarket Ignition
Water Temperature	60-240°F	2-1/16"	311CC		Temp Sender 280EC
Water Temperature	100-250°F	2-1/16"		361AT72	72" Tubing Length
Water Temperature	100-250°F	2-5/8"		692H72	72" Tubing Length
Motor Minder	0-30 Inches	2-1/16"		82179	Color Band, 6ft (82553-F) or 16ft (366HM-F) Tube Kit
Voltmeter	10-16V	2-1/16"	375T		Color Band
Voltmeter	10-16V	2-5/8"	690TM		Color Band

GREEN LINE™ KITS

82177	6-Gauge Kit	Includes: Electric speedometer, tachometer, oil pressure gauge, water temperature gauge, fuel level gauge, and voltmeter; Electrical senders, light kits, mounting hardware, and installation instructions.
82178	6-Gauge Kit	Includes: Mechanical oil pressure gauge and water temperature gauge; Electric speedometer, tachometer, fuel level gauge, and voltmeter; Tubing kit for oil pressure gauge, fuel level sender, light kits, mounting hardware, and installation instructions.

POWER SERIES™

Stewart Warner salutes the “Muscle Cars” of yesterday and today with our Power Series instruments. Derived from the real thing, our Custom Deluxe product line used in Big 3 muscle cars of that era. Available in three accent colors, these instruments deliver the performance you require.

- Classic muscle car look
- Unique light ring for superior night time illumination
- Polished SAE step bezel
- Sealed front, dust proof rear



82517



82760



82839



82759



82843



82753

BLUE/GRAY POWER SERIES™

TYPE	RANGE	SIZE	ELEC	MECH	NOTES/ADDITIONAL KITS NEEDED
Fuel Level	E-1/2-F	2-1/16"	82517		Fuel Level Sender (240-33.5 Ω) SW Match
Oil Pressure	0-80 PSI	2-1/16"	82760		Pressure Sender 279A
Oil Pressure	0-80 PSI	2-1/16"		82763	6ft (82553-F) or 16ft (366HM-F) Tube Kit
Speedometer	0-160 MPH	3-3/8"	82841		988P GPS or 82623B Hall Effect Senders Recommended
Tachometer	0-8,000 RPM	3-3/8"	82838		Tach Adaptor May Be Required w/ Aftermarket Ignition
Water Temperature	100-240°F	2-1/16"	82761		Temp Sender 280EC
Water Temperature	100-265°F	2-1/16"		82844	72" Tubing Length
Voltmeter	10-16V	2-1/16"	82762		

BLUE/GRAY POWER SERIES™ KITS

82253	5-Gauge Kit	Includes: Electric speedometer, oil pressure gauge, water temperature gauge, fuel level gauge, and voltmeter; Electrical senders, light kits, mounting hardware, and installation instructions.			
82256	5-Gauge Kit	Includes: Mechanical oil pressure gauge and water temperature gauge; Electric speedometer, fuel level gauge, and voltmeter; Tubing kit for oil pressure gauge, fuel level sender, light kits, mounting hardware, and installation instructions.			
82247	6-Gauge Kit	Includes: Electric speedometer, tachometer, oil pressure gauge, water temperature gauge, fuel level gauge, and voltmeter; Electrical senders, light kits, mounting hardware, and installation instructions.			
82250	6-Gauge Kit	Includes: Mechanical oil pressure gauge and water temperature gauge; Electric speedometer, tachometer, fuel level gauge, and voltmeter; Tubing kit for oil pressure gauge, fuel level sender, light kits, mounting hardware, and installation instructions.			

BURGUNDY POWER SERIES™

TYPE	RANGE	SIZE	ELEC	MECH	NOTES/ADDITIONAL KITS NEEDED
Fuel Level	E-1/2-F	2-1/16"	82515		Fuel Level Sender (240-33.5 Ω) SW Match
Oil Pressure	0-80 PSI	2-1/16"	82752		Pressure Sender 279A
Oil Pressure	0-80 PSI	2-1/16"		82755	6ft (82553-F) or 16ft (366HM-F) Tube Kit
Speedometer	0-160 MPH	3-3/8"	82839		988P GPS or 82623B Hall Effect Senders Recommended
Tachometer	0-8,000 RPM	3-3/8"	82845		Tach Adaptor May Be Required w/ Aftermarket Ignition
Water Temperature	100-240°F	2-1/16"	82753		Temp Sender 280EC
Water Temperature	100-265°F	2-1/16"		82842	72" Tubing Length
Voltmeter	10-16V	2-1/16"	82754		

BURGUNDY POWER™ SERIES KITS

82251	5-Gauge Kit	Includes: Electric speedometer, oil pressure gauge, water temperature gauge, fuel level gauge, and voltmeter; Electrical senders, light kits, mounting hardware, and installation instructions.			
82254	5-Gauge Kit	Includes: Mechanical oil pressure gauge and water temperature gauge; Electric speedometer, fuel level gauge, and voltmeter; Tubing kit for oil pressure gauge, fuel level sender, light kits, mounting hardware, and installation instructions.			
82245	6-Gauge Kit	Includes: Electric speedometer, tachometer, oil pressure gauge, water temperature gauge, fuel level gauge, and voltmeter; Electrical senders, light kits, mounting hardware, and installation instructions.			
82248	6-Gauge Kit	Includes: Mechanical oil pressure gauge and water temperature gauge; Electric speedometer, tachometer, fuel level gauge, and voltmeter; Tubing kit for oil pressure gauge, fuel level sender, light kits, mounting hardware, and installation instructions.			

TITANIUM POWER SERIES™

TYPE	RANGE	SIZE	ELEC	MECH	NOTES/ADDITIONAL KITS NEEDED
Fuel Level	E-1/2-F	2-1/16"	82516		Fuel Level Sender (240-33.5 Ω) SW Match
Oil Pressure	0-80 PSI	2-1/16"	82756		Pressure Sender 279A
Oil Pressure	0-80 PSI	2-1/16"		82759	6ft (82553-F) or 16ft (366HM-F) Tube Kit
Speedometer	0-160 MPH	3-3/8"	82840		988P GPS or 82623B Hall Effect Senders Recommended
Tachometer	0-8,000 RPM	3-3/8"	82837		Tach Adaptor May Be Required w/ Aftermarket Ignition
Water Temperature	100-240°F	2-1/16"	82757		Temp Sender 280EC
Water Temperature	100-265°F	2-1/16"		82843	72" Tubing Length
Voltmeter	10-16V	2-1/16"	82758		

TITANIUM POWER SERIES™ KITS

82252	5-Gauge Kit	Includes: Electric speedometer, oil pressure gauge, water temperature gauge, fuel level gauge, and voltmeter; Electrical senders, light kits, mounting hardware, and installation instructions.			
82255	5-Gauge Kit	Includes: Mechanical oil pressure gauge and water temperature gauge; Electric speedometer, fuel level gauge, and voltmeter; Tubing kit for oil pressure gauge, fuel level sender, light kits, mounting hardware, and installation instructions.			
82246	6-Gauge Kit	Includes: Electric speedometer, tachometer, oil pressure gauge, water temperature gauge, fuel level gauge, and voltmeter; Electrical senders, light kits, mounting hardware, and installation instructions.			
82249	6-Gauge Kit	Includes: Mechanical oil pressure gauge and water temperature gauge; Electric speedometer, tachometer, fuel level gauge, and voltmeter; Tubing kit for oil pressure gauge, fuel level sender, light kits, mounting hardware, and installation instructions.			

DELUXE™

Perhaps the most popular Stewart Warner gauge line ever, Deluxe™ established the industry standard more than 50 years ago. Easy to read graphics, low-profile stainless bezel, and a patented light ring make this gauge one of the most recognizable in the business.

- Classic, easy-to-read, graphics
- Unique light ring for superior night time illumination
- Polished SAE step bezel
- Sealed front, dust proof rear



82170



82962



82303



82309



82961-WHT



82305-WHT



82787



82307-WHT



BLACK FACE DELUXE™

TYPE	RANGE	SIZE	ELEC	MECH	NOTES/ADDITIONAL KITS NEEDED
Ammeter	30-0-30	2-1/16"	82310		Internally Shunted
Ammeter	60-0-60	2-1/16"	82311		Internally Shunted
Ammeter	60-0-60	2-5/8"	82404		Internally Shunted
Fuel Level	E-1/2-F	2-1/16"	82303		Fuel Level Sender (240-33.5 Ω) SW Match
Fuel Level	E-1/2-F	2-1/16"	82341		Fuel Level Sender (0-90 Ω) AC Match
Fuel Level	E-1/2-F	2-1/16"	82342		Fuel Level Sender (73-10 Ω) Introl Match
Fuel Level	E-1/2-F	2-5/8"	82413		Fuel Level Sender (240-33.5 Ω) SW Match
Air Pressure	10-150 PSI	2-1/16"		82329	6ft (82553-F) or 16ft (366HM-F) Tube Kit
Air Pressure	10-150 PSI	2-5/8"		82408	6ft (82553-F) or 16ft (366HM-F) Tube Kit
Fuel Pressure	0-16 PSI	2-1/16"	82333		Pressure Sender 82504-F
Fuel Pressure	0-100 PSI	2-1/16"	82436		Pressure Sender 279B-F
Fuel Pressure	0-15 PSI	1-1/2"		838138	Liquid Filled, Direct Mount
Fuel Pressure	2-30 PSI	2-1/16"		82320	6ft (82553-F) or 16ft (366HM-F) Tube Kit
Fuel Pressure	1-15 PSI	2-5/8"		82405	6ft (82553-F) or 16ft (366HM-F) Tube Kit
Manifold Pressure	2-30 PSI	2-1/16"		82321	6ft (82553-F) or 16ft (366HM-F) Tube Kit
Oil Pressure	0-100 PSI	2-1/16"	82305		Pressure Sender 279B-F
Oil Pressure	0-700 kPa	2-1/16"	82387		Pressure Sender 279B-F
Oil Pressure	5-100 PSI	2-1/16"		82323	6ft (82553-F) or 16ft (366HM-F) Tube Kit
Oil Pressure	5-100 PSI	2-5/8"		82406	6ft (82553-F) or 16ft (366HM-F) Tube Kit
Pressure	0-100 PSI	1-1/2"		838140	Liquid Filled, Direct Mount
Speedometer	5-85 MPH	3-3/8"	82637		82623B Hall Effect Senders Recommended
Speedometer	0-140 km/h	3-3/8"	82656		82623B Hall Effect Senders Recommended
Speedometer	0-120 MPH	3-3/8"	82896		988P GPS or 82623B Hall Effect Senders Recommended
Speedometer	0-160 MPH	3-3/8"	82961		988P GPS or 82623B Hall Effect Senders Recommended
Speedometer	0-180 MPH	3-3/8"	82962		Reverse Sweep, 988P GPS or 82623B Hall Effect Senders Recommended
Speedometer	0-160 MPH	5"	82698		988P GPS or 82623B Hall Effect Senders Recommended
Speedometer	5-85 MPH	3-3/8"		82677	Cable Driven
Speedometer	0-160 MPH	3-3/8"		550BP-D	Cable Driven
Tachometer	0-8,000 RPM	2-1/16"	82675		For 8cyl Engines Only
Tachometer	0-3,500 RPM	3-3/8"	82635		Diesel Tach For Alternator Applications
Tachometer	0-6,000 RPM	3-3/8"	82162B		Tach Adaptor May Be Required w/ Aftermarket Ignition
Tachometer	0-8,000 RPM	3-3/8"	82170		Tach Adaptor May Be Required w/ Aftermarket Ignition
Tachometer	0-8,000 RPM	3-3/8"	82181		Sidewinder, Tach Adaptor May Be Required w/ Aftermarket Ignition
Tachometer	0-10,000 RPM	5"	82699		Tach Adaptor May Be Required w/ Aftermarket Ignition
Tachometer	0-5,000 RPM	3-3/8"		551AKM-D	Cable Driven; .5:1 Ratio
Oil Temperature	140-320°F	2-1/16"	82308		Temp Sender 280EE-F
Oil Temperature	140-325°F	2-1/16"		82327-xx	-xx Indicates Tubing Length in Inches
Oil Temperature	60-160°C	2-1/16"		82395-xx	-xx Indicates Tubing Length in Inches
Oil Temperature	140-325°F	2-5/8"		82410-xx	-xx Indicates Tubing Length in Inches
Trans Oil Temperature	150-350°F	2-1/16"	82344		Temp Sender 280EE-F
Water Temperature	100-280°F	2-1/16"	82307		Temp Sender 280ED-F
Water Temperature	40-115°C	2-1/16"	82389		Temp Sender 280EC
Water Temperature	100-265°F	2-1/16"		82326-xx	-xx Indicates Tubing Length in Inches
Water Temperature	40-130°C	2-1/16"		82394-144	144" Tubing Length
Water Temperature	100-265°F	2-5/8"		82409-xx	-xx Indicates Tubing Length in Inches
Vacuum	0-30 in Hg	2-1/16"		82328	6ft (82553-F) or 16ft (366HM-F) Tube Kit

BLACK FACE DELUXE™

TYPE	RANGE	SIZE	ELEC	MECH	NOTES/ADDITIONAL KITS NEEDED
Vacuum	0-30 Inches	2-5/8"		82411	6ft (82553-F) or 16ft (366HM-F) Tube Kit
Motor Minder	0-30 Inches	2-1/16"		82175	Color Band, 6ft (82553-F) or 16ft (366HM-F) Tube Kit
Vac/Boost	0-30 in Hg/0-15 PSI	2-1/16"		82340	6ft (82553-F) or 16ft (366HM-F) Tube Kit
Voltmeter	10-16V	2-1/16"	82309		Color Band
Voltmeter	10-16V	2-1/16"	82391		

BLACK FACE DELUXE™ KITS

82218	6-Gauge Kit	Includes: Mechanical speedometer; Electric tachometer, oil pressure gauge, water temperature gauge, fuel level gauge, and voltmeter; Electrical senders, light kits, mounting hardware, and installation instructions.			
82262	6-Gauge Kit	Includes: Electric speedometer, tachometer, oil pressure gauge, water temperature gauge, fuel level gauge, and voltmeter; Electrical senders, light kits, mounting hardware, and installation instructions.			
82263	6-Gauge Kit	"Cobra Kit" Includes: Electric reverse sweep speedometer, tachometer, oil pressure gauge, water temperature gauge, fuel level gauge, and voltmeter; Electrical senders, light kits, mounting hardware, and installation instructions.			
82264	6-Gauge Kit	"Cobra Kit" Includes: Electric reverse sweep speedometer, tachometer, fuel level gauge, and voltmeter; Mechanical oil pressure gauge and water temperature gauge; Electrical senders, light kits, mounting hardware, and installation instructions.			

WHITE FACE DELUXE™

TYPE	RANGE	SIZE	ELEC	MECH	NOTES/ADDITIONAL KITS NEEDED
Ammeter	60-0-60	2-1/16"	82311-WHT		Internally Shunted
Ammeter	100-0-100	2-1/16"	82313-WHT		Internally Shunted
Fuel Level	E-1/2-F	2-1/16"	82303-WHT		Fuel Level Sender (240-33.5 Ω) SW Match
Fuel Level	E-1/2-F	2-1/16"	82341-WHT		Fuel Level Sender (0-90 Ω) AC Match
Fuel Level	E-1/2-F	2-1/16"	82342-WHT		Fuel Level Sender (73-10 Ω) Introl Match
Air Pressure	10-150 PSI	2-1/16"		82329-WHT	6ft (82553-F) or 16ft (366HM-F) Tube Kit
Fuel Pressure	0-15 PSI	1-1/2"		838139	Liquid Filled, Direct Mount
Fuel Pressure	1-10 PSI	2-1/16"		82319-WHT	6ft (82553-F) or 16ft (366HM-F) Tube Kit
Fuel Pressure	10-200 PSI	2-1/16"		82325-WHT	6ft (82553-F) or 16ft (366HM-F) Tube Kit
Fuel Pressure	0-16 PSI	2-1/16"	82333-WHT		Pressure Sender 82504-F
Fuel Pressure	0-100 PSI	2-1/16"	82436-WHT		Pressure Sender 279B-F
Oil Pressure	0-100 PSI	2-1/16"	82305-WHT		Pressure Sender 279B-F
Oil Pressure	5-100 PSI	2-1/16"		82323-WHT	6ft (82553-F) or 16ft (366HM-F) Tube Kit
Pressure	0-100 PSI	1-1/2"		838141	Liquid Filled, Direct Mount
Speedometer	0-160 MPH	3-3/8"	82961-WHT		988P GPS or 82623B Hall Effect Senders Recommended
Tachometer	0-8,000 RPM	3-3/8"	82170-WHT		Tach Adaptor May Be Required w/ Aftermarket Ignition
Oil Temperature	140-320°F	2-1/16"	82308-WHT		Temp Sender 280EE-F
Water Temperature	100-280°F	2-1/16"	82307-WHT		Temp Sender 280ED-F
Water Temperature	100-265°F	2-1/16"		82326-xx-WHT	
Vacuum	0-30 in Hg	2-1/16"		82328-WHT	6ft (82553-F) or 16ft (366HM-F) Tube Kit
Voltmeter	10-16V	2-1/16"	82309-WHT		Color Band

WHITE FACE DELUXE™ KITS

82266	6-Gauge Kit	Includes: Electric speedometer, tachometer, oil pressure gauge, water temperature gauge, fuel level gauge, and voltmeter; Electrical senders, light kits, mounting hardware, and installation instructions.			
-------	-------------	-------------------------------------------------------------------------------------------------------------------------------------------------------------------------------------------------------------	--	--	--

"TRANS AM" DELUXE™ TACHOMETER

TYPE	RANGE	SIZE	ELEC	MECH	NOTES/ADDITIONAL KITS NEEDED
Tachometer	0-8,000 RPM	3-3/8"	82787		Red Face Sidewinder, Tach Adaptor May Be Required w/ Aftermarket Ignition

"TRANS AM" DELUXE™ KITS

82265	6-Gauge Kit	Includes: Electric speedometer, red face sidewinder tachometer, oil pressure gauge, water temperature gauge, fuel level gauge, and voltmeter; Electrical senders, light kits, mounting hardware, and installation instructions.			
-------	-------------	---------------------------------------------------------------------------------------------------------------------------------------------------------------------------------------------------------------------------------	--	--	--

WINGS™

Wings™ is a blast from the past featuring our famous 1940s Wings™ logo, domed lens, teardrop pointer, and chrome bezels with white or black dials and the reliability of modern Stewart Warner products. These are ideal for street rods, classic cars or trucks and automotive enthusiasts everywhere.

- Nostalgic '40s and '50s styling
- Unique light ring for superior night time illumination
- Chrome SAE step bezel
- Sealed front, dust proof rear



82492



82176



82479-xx



838137 (Liquid filled)



82662



82659



838134 (Liquid filled)



82471

BEIGE FACE WINGS™

TYPE	RANGE	SIZE	ELEC	MECH	NOTES/ADDITIONAL KITS NEEDED
Fuel Level	E-1/2-F	2-1/16"	82471-BG		Fuel Level Sender (240-33.5 Ω) SW Match
Oil Pressure	0-80 PSI	2-1/16"	82473-BG		Pressure Sender 279A
Oil Pressure	0-80 PSI	2-1/16"		82475-BG	6ft (82553-F) or 16ft (366HM-F) Tube Kit
Speedometer	0-120 MPH	3-3/8"	82669-BG		988P GPS or 82623B Hall Effect Senders Recommended
Speedometer	0-160 MPH	3-3/8"	82661-BG		988P GPS or 82623B Hall Effect Senders Recommended
Speedometer	0-160 MPH	3-3/8"		82663-BG	Cable Driven
Tachometer	0-8,000 RPM	3-3/8"	82659-BG		Tach Adaptor May Be Required w/ Aftermarket Ignition
Oil Temperature	140-320°F	2-1/16"	82489-BG		Temp Sender 280EE-F
Water Temperature	100-240°F	2-1/16"	82477-BG		Temp Sender 280EC
Water Temperature	100-265°F	2-1/16"		82479-72BG	72" Capillary Tubing
Voltmeter	10-16V	2-1/16"	82481-BG		

BEIGE FACE WINGS™ KITS

82267	6-Gauge Kit	Includes: Electric speedometer, tachometer, oil pressure gauge, water temperature gauge, fuel level gauge, and voltmeter; Electrical senders, light kits, mounting hardware, and installation instructions.			
82268	6-Gauge Kit	Includes: Mechanical speedometer; Electric tachometer, fuel level gauge, and voltmeter; Mechanical oil pressure gauge and water temperature gauge; Electrical senders, light kits, mounting hardware, and installation instructions.			

BLACK FACE WINGS™

TYPE	RANGE	SIZE	ELEC	MECH	NOTES/ADDITIONAL KITS NEEDED
Fuel Level	E-1/2-F	2-1/16"	82472		Fuel Level Sender (240-33.5 Ω) SW Match
Fuel Level	E-1/2-F	2-1/16"	82494		Fuel Level Sender (0-90 Ω) AC Match
Fuel Level	E-1/2-F	2-1/16"	82496		Fuel Level Sender (73-10 Ω) Introl Match
Air Pressure	10-150 PSI	2-1/16"		82488	6ft (82553-F) or 16ft (366HM-F) Tube Kit
Air Suspension Pressure	2-100 PSI	2-1/16"		82484	6ft (82553-F) or 16ft (366HM-F) Tube Kit
Fuel Pressure	0-15 PSI	1-1/2"		838134	Liquid Filled, Direct Mount
Oil Pressure	0-80 PSI	2-1/16"	82474		Pressure Sender 279A
Oil Pressure	0-80 PSI	2-1/16"		82476	6ft (82553-F) or 16ft (366HM-F) Tube Kit
Pressure	0-100 PSI	1-1/2"		838136	Liquid Filled, Direct Mount
Speedometer	0-120 MPH	3-3/8"	82670		988P GPS or 82623B Hall Effect Senders Recommended
Speedometer	0-160 MPH	3-3/8"	82662		988P GPS or 82623B Hall Effect Senders Recommended
Speedometer	0-160 MPH	3-3/8"		82664	Cable Driven
Tachometer	0-8,000 RPM	3-3/8"	82660		Tach Adaptor May Be Required w/ Aftermarket Ignition
Oil Temperature	140-320°F	2-1/16"	82490		Temp Sender 280EE-F
Water Temperature	100-240°F	2-1/16"	82478		Temp Sender 280EC
Water Temperature	100-265°F	2-1/16"		82480-xx	-xx Indicates Tubing Length in Inches
Motor Minder	0-30 Inches	2-1/16"		82176	Color Band, 6ft (82553-F) or 16ft (366HM-F) Tube Kit
Vac/Boost	0-30 in Hg/0-40 PSI	2-1/16"		82492	6ft (82553-F) or 16ft (366HM-F) Tube Kit
Voltmeter	10-16V	2-1/16"	82482		

BLACK FACE WINGS™ KITS

82229	5-Gauge Kit	Includes: Electric speedometer, oil pressure gauge, water temperature gauge, fuel level gauge, and voltmeter; Electrical senders, light kits, mounting hardware, and installation instructions.			
82227	5-Gauge Kit	Includes: Mechanical speedometer; Electric oil pressure gauge, water temperature gauge, fuel level gauge, and voltmeter; Electrical senders, light kits, mounting hardware, and installation instructions.			
82223	6-Gauge Kit	Includes: Electric speedometer, tachometer, oil pressure gauge, water temperature gauge, fuel level gauge, and voltmeter; Electrical senders, light kits, mounting hardware, and installation instructions.			
82225	6-Gauge Kit	Includes: Mechanical speedometer; Electric tachometer, fuel level gauge, and voltmeter; Mechanical oil pressure gauge and water temperature gauge; Electrical senders, light kits, mounting hardware, and installation instructions.			

WHITE FACE WINGS™

TYPE	RANGE	SIZE	ELEC	MECH	NOTES/ADDITIONAL KITS NEEDED
Fuel Level	E-1/2-F	2-1/16"	82471		Fuel Level Sender (240-33.5 Ω) SW Match
Fuel Level	E-1/2-F	2-1/16"	82493		Fuel Level Sender (0-90 Ω) AC Match
Fuel Level	E-1/2-F	2-1/16"	82495		Fuel Level Sender (73-10 Ω) Introl Match
Air Pressure	10-150 PSI	2-1/16"		82487	6ft (82553-F) or 16ft (366HM-F) Tube Kit
Air Suspension Pressure	2-100 PSI	2-1/16"		82483	6ft (82553-F) or 16ft (366HM-F) Tube Kit
Fuel Pressure	0-15 PSI	1-1/2"		838135	Liquid Filled, Direct Mount
Oil Pressure	0-80 PSI	2-1/16"	82473		Pressure Sender 279A
Oil Pressure	0-80 PSI	2-1/16"		82475	6ft (82553-F) or 16ft (366HM-F) Tube Kit
Pressure	0-100 PSI	1-1/2"		838137	Liquid Filled, Direct Mount
Speedometer	0-120 MPH	3-3/8"	82669		988P GPS or 82623B Hall Effect Senders Recommended
Speedometer	0-160 MPH	3-3/8"	82661		988P GPS or 82623B Hall Effect Senders Recommended
Speedometer	0-160 MPH	3-3/8"		82663	Cable Driven
Tachometer	0-8,000 RPM	3-3/8"	82659		Tach Adaptor May Be Required w/ Aftermarket Ignition
Oil Temperature	140-320°F	2-1/16"	82489		Temp Sender 280EE-F
Water Temperature	100-240°F	2-1/16"	82477		Temp Sender 280EC
Water Temperature	100-265°F	2-1/16"		82479-xx	-xx Indicates Tubing Length in Inches
Motor Minder	0-30 Inches	2-1/16"		82180	Color Band, 6ft (82553-F) or 16ft (366HM-F) Tube Kit
Vac/Boost	0-30 in Hg/0-40 PSI	2-1/16"		82491	6ft (82553-F) or 16ft (366HM-F) Tube Kit
Voltmeter	10-16V	2-1/16"	82481		

WHITE FACE WINGS™ KITS

82228	5-Gauge Kit	Includes: Electric speedometer, oil pressure gauge, water temperature gauge, fuel level gauge, and voltmeter; Electrical senders, light kits, mounting hardware, and installation instructions.
82226	5-Gauge Kit	Includes: Mechanical speedometer; Electric oil pressure gauge, water temperature gauge, fuel level gauge, and voltmeter; Electrical senders, light kits, mounting hardware, and installation instructions.
82222	6-Gauge Kit	Includes: Electric speedometer, tachometer, oil pressure gauge, water temperature gauge, fuel level gauge, and voltmeter; Electrical senders, light kits, mounting hardware, and installation instructions.
82224	6-Gauge Kit	Includes: Mechanical speedometer; Electric tachometer, fuel level gauge, and voltmeter; Mechanical oil pressure gauge and water temperature gauge; Electrical senders, light kits, mounting hardware, and installation instructions.



STANDARD™

Standard instruments feature timeless white on black graphics, white pointers, and a bright, flat stainless steel corrosion resistant bezel.

- Classic white graphics on black face dial with white pointer
- Flat bright stainless steel bezel
- Not internally illuminated



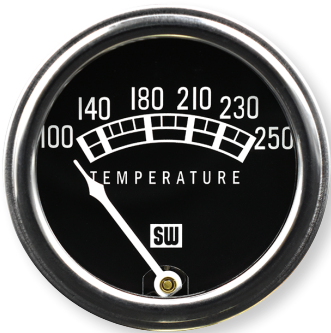
82211



82208



82200



82210-xx

STANDARD™					
TYPE	RANGE	SIZE	ELEC	MECH	NOTES/ADDITIONAL KITS NEEDED
Ammeter	30-0-30	2-1/32"	82200		Internally Shunted
Ammeter	60-0-60	2-1/32"	82202		Internally Shunted
Fuel Level	E-1/2-F	2-1/32"	82211		Fuel Level Sender (240-33.5 Ω) SW Match
Pressure	0-80 PSI	2-1/32"		82208	6ft (82553-F) or 16ft (366HM-F) Tube Kit
Pressure	0-100 PSI	2-1/32"		82209	6ft (82553-F) or 16ft (366HM-F) Tube Kit
Water Temperature	100-250°F	2-1/32"		82210-xx	-xx Indicates Tubing Length in Inches

HEAVY DUTY™

An authentic look for yesterday's or today's cars or trucks, these gauges are just that—Heavy Duty. Like all Stewart Warner gauges, Heavy Duty gauges can be installed easily as OE replacement or aftermarket add-ons. Ruggedly constructed, they will perform on highway or off.

- Bold white on black graphics and white pointer
- Unique light ring for superior night time illumination
- Black raised bezel with brushed rim
- Sealed front, dust proof rear



284M



82171



284D



284H



284A

HEAVY DUTY™

TYPE	RANGE	SIZE	ELEC	MECH	NOTES/ADDITIONAL KITS NEEDED
Ammeter	60-0-60	2-1/16"	284A		Internally Shunted
Ammeter	100-0-100	2-1/16"	284AA		Shunt 407616
Ammeter	150-0-150	2-1/16"	284AD		Shunt 413717
Fuel Level	E-1/2-F	2-1/16"	284M		Fuel Level Sender (240-33.5 Ω) SW Match
Fuel Level	E-1/2-F	2-1/16"	284BS		Fuel Level Sender (0-90 Ω) AC Match
Fuel Level	E-1/2-F	2-1/16"	284BR		Fuel Level Sender (73-10 Ω) Introl Match
Air Pressure	0-150 PSI	2-1/16"		284T	6ft (82553-F) or 16ft (366HM-F) Tube Kit
Air Pressure	5-100 PSI	2-1/16"		284N	6ft (82553-F) or 16ft (366HM-F) Tube Kit
Air Pressure	10-150 PSI	2-1/16"		82331	Dual Pressure, 6ft (82553-F) or 16ft (366HM-F) Tube Kit
Fuel Pressure	1-15 PSI	2-1/16"		284E	6ft (82553-F) or 16ft (366HM-F) Tube Kit
Oil Pressure	0-100 PSI	2-1/16"	284L		Pressure Sender 279B-F
Oil Pressure	10-200 PSI	2-1/16"		284P	6ft (82553-F) or 16ft (366HM-F) Tube Kit
Oil Pressure	5-100 PSI	2-1/16"		284D	6ft (82553-F) or 16ft (366HM-F) Tube Kit
Transmission Oil Pressure	20-300 PSI	2-1/16"		284R	6ft (82553-F) or 16ft (366HM-F) Tube Kit
Transmission Oil Pressure	25-400 PSI	2-1/16"		284S	6ft (82553-F) or 16ft (366HM-F) Tube Kit
Speedometer	5-85 MPH	3-3/8"	82642		82623B Hall Effect Senders Recommended
Speedometer	0-80 MPH	3-3/8"		550HF-D	Cable Driven, High Beam Indicator
Speedometer	0-160 MPH	3-3/8"		550HH-D	Cable Driven

HEAVY DUTY™

TYPE	RANGE	SIZE	ELEC	MECH	NOTES/ADDITIONAL KITS NEEDED
Tachometer	0-8,000 RPM	3-3/8"	82171		Tach Adaptor May Be Required w/ Aftermarket Ignition
Tachometer	0-3,500 RPM	3-3/8"	82640		Diesel Tach For Alternator Applications
Tachometer	0-3,500 RPM	3-3/8"	82641		Diesel Tach For Flywheel Applications, Magnetic Pickup 82646
Tachometer	0-3,500 RPM	3-3/8"	82619		Diesel Tach, Hall Effect Sender 82623B
Tachometer	0-3,500 RPM	3-3/8"	551AHK-D		Cable Driven, .5:1 Ratio
Tachometer	0-3,500 RPM	3-3/8"	551AHL-D		Cable Driven, .5:1 Ratio, Hour Meter
Oil Temperature	140-325°F	2-1/16"		284Cxx	xx Indicates Tubing Length in Inches
Water Temperature	100-230°F	2-1/16"	284AF		Temp Sender 280EC
Water Temperature	100-280°F	2-1/16"	284J		Temp Sender 280ED-F
Water Temperature	100-265°F	2-1/16"		284Bxx	xx Indicates Tubing Length in Inches
Voltmeter	10-16V	2-1/16"	284H		Color Band



HEAVY DUTY PLUS™

Stewart Warner Heavy Duty Plus gauges add a new dimension to our Heavy Duty line with vivid white and green graphics, elegant black low profile bezels and high-visibility green dial illumination.

- Easy to read green and white graphics on black with white pointer
- Unique light ring for superior night time illumination
- Black SAE step bezel
- Sealed front, dust proof rear



82355



82645



82372



82376



82398

HEAVY DUTY PLUS™

TYPE	RANGE	SIZE	ELEC	MECH	NOTES/ADDITIONAL KITS NEEDED
Ammeter	300-0-300	2-1/16"	82398		Shunt 413717
Fuel Level	E-1/2-F	2-1/16"	82378		Fuel Level Sender (240-33.5 Ω) SW Match
Oil Pressure	0-80 PSI	2-1/16"	284L		Pressure Sender 279A
Oil Pressure	0-100 PSI	2-1/16"	82358		Pressure Sender 279B-F
Oil Pressure	5-80 PSI	2-1/16"		82363	6ft (82553-F) or 16ft (366HM-F) Tube Kit
Oil Pressure	5-100 PSI	2-1/16"		82372	6ft (82553-F) or 16ft (366HM-F) Tube Kit
Transmission Oil Pressure	20-300 PSI	2-1/16"		82365	6ft (82553-F) or 16ft (366HM-F) Tube Kit
Speedometer	5-85 MPH	3-3/8"	82645		988P GPS or 82623B Hall Effect Senders Recommended
Speedometer	0-160 MPH	3-3/8"	82782		988P GPS or 82623B Hall Effect Senders Recommended
Speedometer	0-140 km/h	3-3/8"	82658		988P GPS or 82623B Hall Effect Senders Recommended
Tachometer	0-8,000 RPM	3-3/8"	82786		Tach Adaptor May Be Required w/ Aftermarket Ignition
Tachometer	0-3,500 RPM	3-3/8"	82643		Diesel Tach For Alternator Applications
Tachometer	0-3,500 RPM	3-3/8"	82644		Diesel Tach For Flywheel Applications, Magnetic Pickup 82646
Tachometer	0-3,500 RPM	3-3/8"	82647		Diesel Tach, Hourmeter, Hall Effect Sender 82623B
Oil Temperature	140-320°F	2-1/16"	82375		Temp Sender 280EE-F
Water Temperature	100-240°F	2-1/16"	82374		Temp Sender 280EC
Voltmeter	10-16V	2-1/16"	82376		
Voltmeter	20-32V	2-1/16"	82377		



ACCESSORIES

FUEL PUMPS

PART NUMBER	VOLTAGE	PSI	GPH	THREAD	NOTES
82089	12	7	20	1/8"-27 NPSF	1-Piece Aluminum Fuel Bowl
82091	12	8	43	1/4"-18 NPSF	Neutral Ground
82092	12	8	43	1/4"-18 NPSF	Marine Use Coating
82093	24	8	43	1/4"-18 NPSF	Neutral Ground
82095	12	6	36	1/4"-18 NPSF	Neutral Ground
82960	Service Kit For All Fuel Pumps Listed Above				

REPLACEMENT LIGHT KITS

PART NUMBER	VOLTAGE	LIGHT HOLE	SOCKET TYPE	TYPE	# OF WIRES
366FK-F	12	5/8"	Metal, 1" Long	Push-In	1 (Black)
366SX	12	5/8"	Plastic, 1" Long	Push-In	2 (Black/White)
366SX24	24	5/8"	Plastic, 1" Long	Push-In	2 (Black/White)

GAUGE MOUNTING PANELS

PART NUMBER	GAUGE SIZE	FINISH	NOTES
817825-F	2-1/16"	Chrome	1 Hole
814143-F	2-1/16"	Chrome	2 Hole
811653-F	2-1/16"	Chrome	3 Hole
366ACM	3-3/8"	Black	1 Hole

PRESSURE GAUGE TUBING KITS

PART NUMBER	LENGTH	INCLUDED IN KIT
82553-F	72" (6 Feet)	1/8" Female PT Nut, 1/8" Male PT Nut, and 1/4" Adaptor Nut
366HM-F	192" (16 Feet)	1/8" Female PT Nut, 1/8" Male PT Nut, and 1/4" Adaptor Nut

SPEEDOMETER/TACHOMETER ACCESSORIES

PART NUMBER	TYPE	NOTES
82625	Sender Tip	0.187" Diameter Tang End
82626	Sender Tip	0.152" Diameter Tang End
82629	Sender Tip	0.104" Square End
407010-F	Rt. Angle Adaptor	1:1 Ratio; 5/8"-18 Thread; CW Rotation; 0.104" Sq Drive Tip
411335-D	Rt. Angle Adaptor	1:1 Ratio; 5/8"-18 Thread; CCW Rotation; 0.104" Sq Drive Tip
366ADB	Ford Quick Disconnect Adaptor	Order 82623B Hall Effect Sender Separately

FUEL SENDER ACCESSORIES

PART NUMBER	DESCRIPTION	NOTES
366LP-F	Fuel Sender Install Kit	Flange, Gasket, Washers, and Screws
72030	Replacement Gasket	SAE 5-Hole, Neoprene
429354	Brass Float	

SENDERS

FUEL LEVEL SENDERS

PART NUMBER	CONNECTOR	RESISTANCE	FLANGE POSITION	TANK DEPTH
385AB-P	Spade Termination	240-33.50	Right Hand	4.5-24"
385B-F	Stud Termination	240-33.50	Left Hand	6-12"
385C-F	Stud Termination	240-33.50	Right Hand	6-12"
391A-F	Stud Termination	240-33.50	Left Hand	10-15"
391B-F	Stud Termination	240-33.50	Right Hand	10-15"
391C-D	Stud Termination	240-33.50	Left Hand	15.5-24"
391D-D	Stud Termination	240-33.50	Right Hand	15.5-24"
391PX-D	Stud Termination	240-33.50	Right Hand	27-36"
439363-D	Stud Termination	0-900	Left Hand	15.5-24"
439364-D	Stud Termination	0-900	Right Hand	15.5-24"

PRESSURE SENDERS

PART NUMBER	CONNECTOR	RESISTANCE	PRESSURE	THREAD SIZE
82504-F	Stud Termination	240-33.50	15PSI	1/8" NPT
279A	Stud Termination	240-33.50	80 PSI	1/8" NPT
279B-F	Stud Termination	240-33.50	100 PSI	1/8" NPT
279C	Stud Termination	240-33.50	150 PSI	1/8" NPT
82894	Packard Connector	240-33.50	150 PSI	1/8" NPT
82514	Stud Termination	120-170	80 PSI Dual	1/8" NPT

TEMPERATURE SENDERS

PART NUMBER	TEMP RANGE	HEX SIZE	KIT TYPE	THREAD SIZE
280EC	100-230/240°F	5/8"	With Adaptors	1/8" NPT
280EP	100-230/240°F	5/8"	LS Engines, Sender Only	12mm
334R-D	100-230/240°F	7/8"	Sender Only	1/2" NPT
280ED-F	100-280°F	5/8"	With Adaptors	1/8" NPT
280ER	100-280°F	5/8"	LS Engines, Sender Only	12mm
334AA-D	100-280°F	5/8"	Sender Only	1/4" NPT
334AB-D	100-280°F	3/4"	Sender Only	3/8" NPT
334AD-D	100-280°F	7/8"	Sender Only	1/2" NPT
280EE-F	140-320°F	5/8"	With Adaptors	1/8" NPT

SPEEDOMETER/TACHOMETER SENDERS & SENSORS

PART NUMBER	TYPE	SENDER TIP	CONFIGURATION	NOTES
988P	GPS Receiver	N/A	8,000 PPM/16,000 PPM	Works with all electronic speedometers with a calibration range that accepts either 8,000 PPM or 16,000 PPM
82623B	Hall Effect Sensor	0.187 Tang	7/8"-18 thread	8 Pulses/rev - 3 wire
82646	Magnetic Sensor	N/A	3/4"-16 UNF thread	Able to run 2 meters



279B-F



385B-F



280ED-F

STEWARTWARNER.COM

800-676-1837 • Follow us:  

